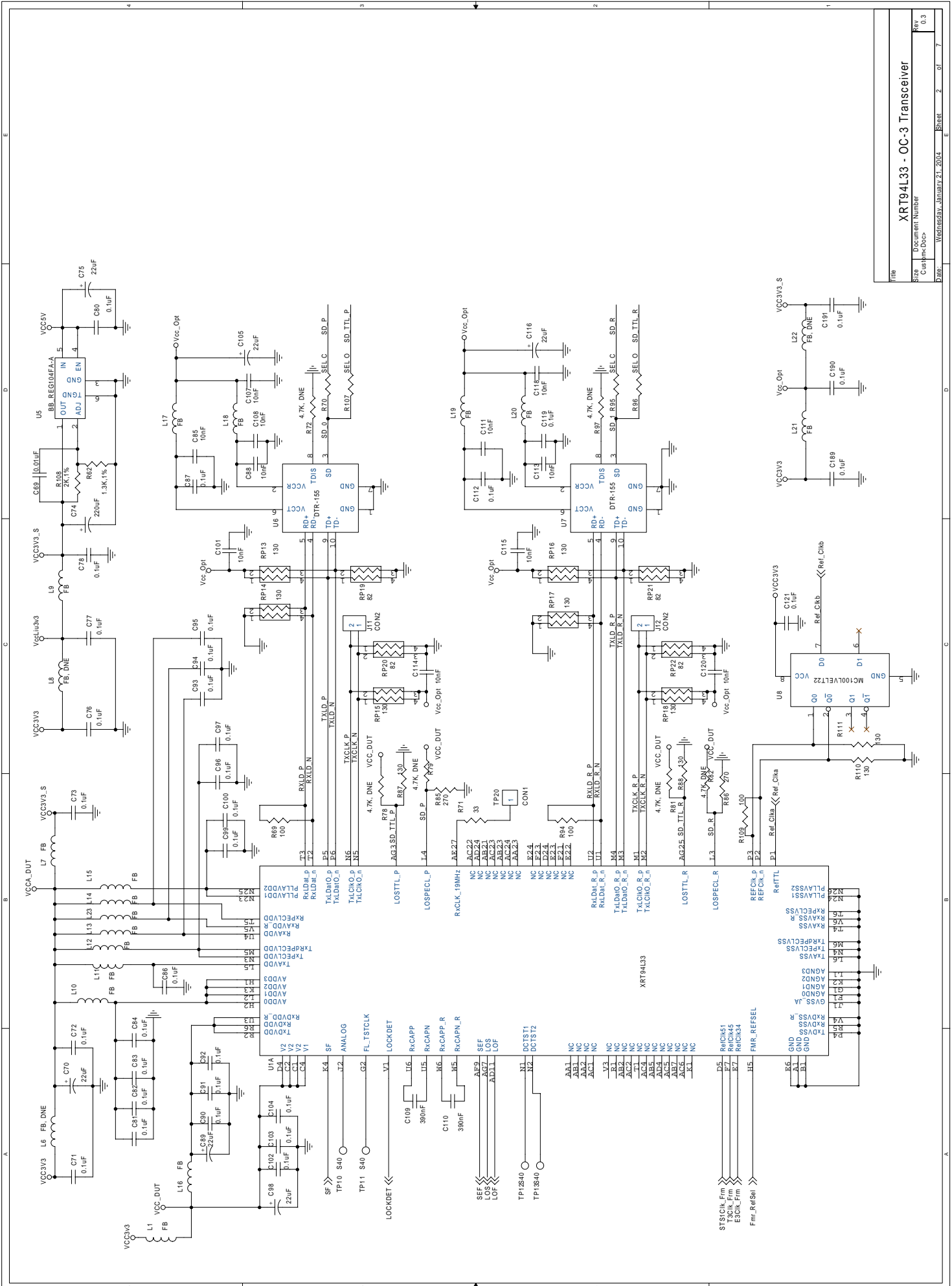


File	XRT94L33 EVAL - PCI Interface
Project Number	
Version	0.3
Date	Wed Aug 14 2002 10:00:00 AM

Pin	Signal	Value
1	CON1A_D16	
2	CON1A_D17	
3	CON1A_D18	
4	CON1A_D19	
5	CON1A_D20	
6	CON1A_D21	
7	CON1A_D22	
8	CON1A_D23	
9	CON1A_D24	
10	CON1A_D25	
11	CON1A_D26	
12	CON1A_D27	
13	CON1A_D28	
14	CON1A_D29	
15	CON1A_D30	
16	CON1A_D31	
17	CON1A_D32	
18	CON1A_D33	
19	CON1A_D34	
20	CON1A_D35	
21	CON1A_D36	
22	CON1A_D37	
23	CON1A_D38	
24	CON1A_D39	
25	CON1A_D40	
26	CON1A_D41	
27	CON1A_D42	
28	CON1A_D43	
29	CON1A_D44	
30	CON1A_D45	
31	CON1A_D46	
32	CON1A_D47	
33	CON1A_D48	
34	CON1A_D49	
35	CON1A_D50	
36	CON1A_D51	
37	CON1A_D52	
38	CON1A_D53	
39	CON1A_D54	
40	CON1A_D55	
41	CON1A_D56	
42	CON1A_D57	
43	CON1A_D58	
44	CON1A_D59	
45	CON1A_D60	
46	CON1A_D61	
47	CON1A_D62	
48	CON1A_D63	
49	CON1A_D64	
50	CON1A_D65	
51	CON1A_D66	
52	CON1A_D67	
53	CON1A_D68	
54	CON1A_D69	
55	CON1A_D70	
56	CON1A_D71	
57	CON1A_D72	
58	CON1A_D73	
59	CON1A_D74	
60	CON1A_D75	
61	CON1A_D76	
62	CON1A_D77	
63	CON1A_D78	
64	CON1A_D79	
65	CON1A_D80	
66	CON1A_D81	
67	CON1A_D82	
68	CON1A_D83	
69	CON1A_D84	
70	CON1A_D85	
71	CON1A_D86	
72	CON1A_D87	
73	CON1A_D88	
74	CON1A_D89	
75	CON1A_D90	
76	CON1A_D91	
77	CON1A_D92	
78	CON1A_D93	
79	CON1A_D94	
80	CON1A_D95	
81	CON1A_D96	
82	CON1A_D97	
83	CON1A_D98	
84	CON1A_D99	
85	CON1A_D100	

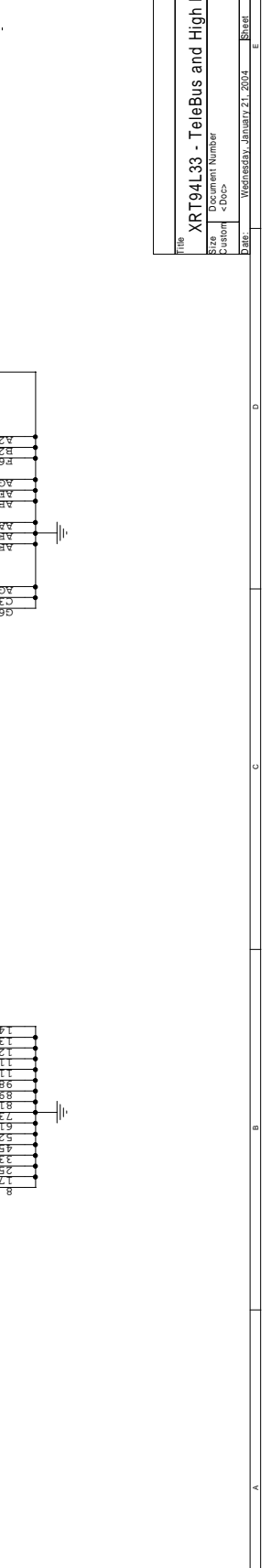
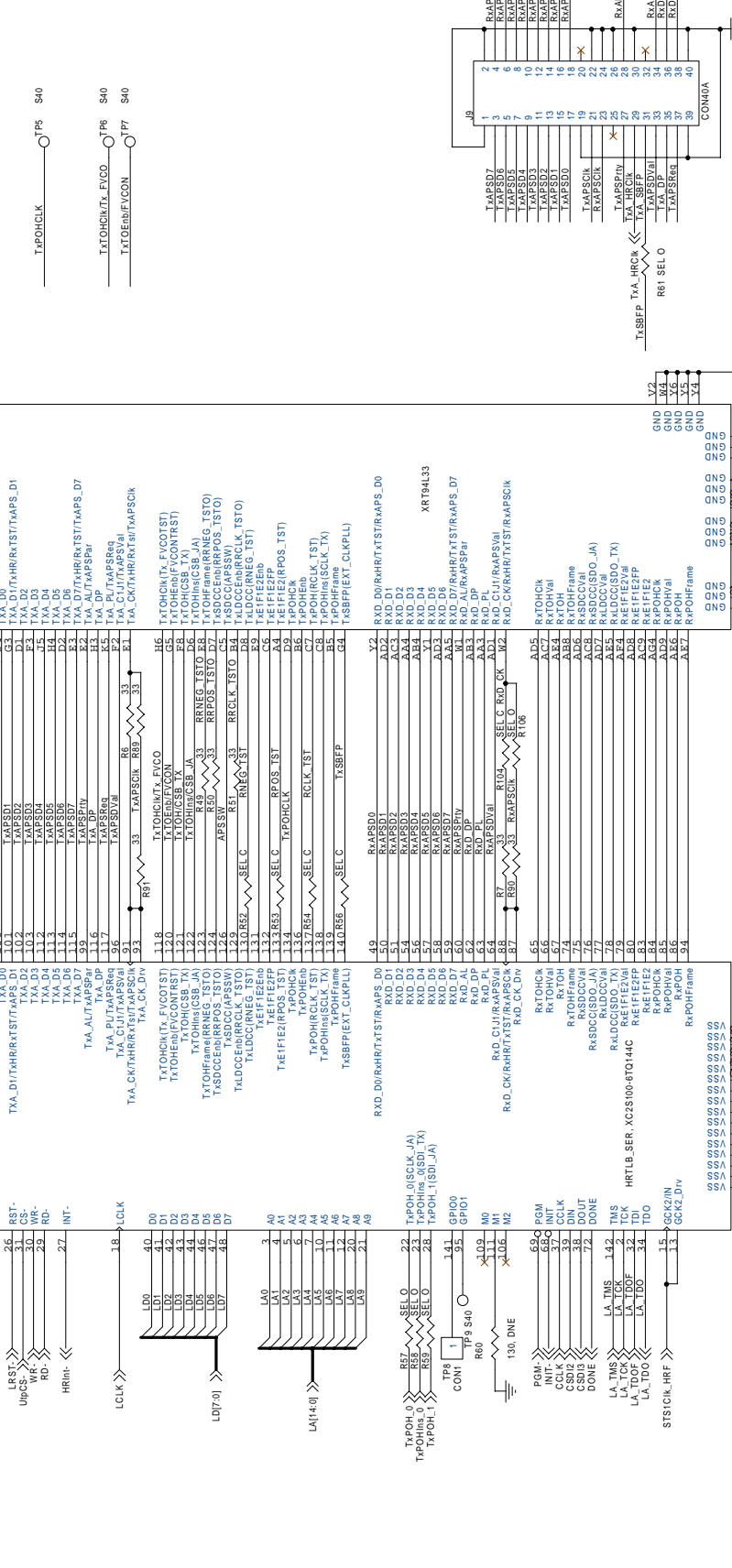
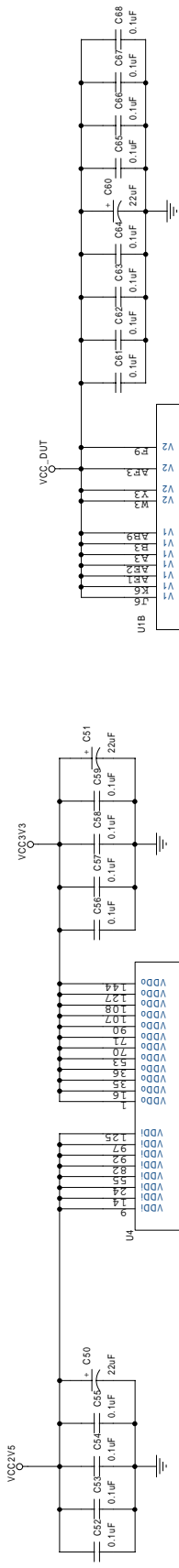


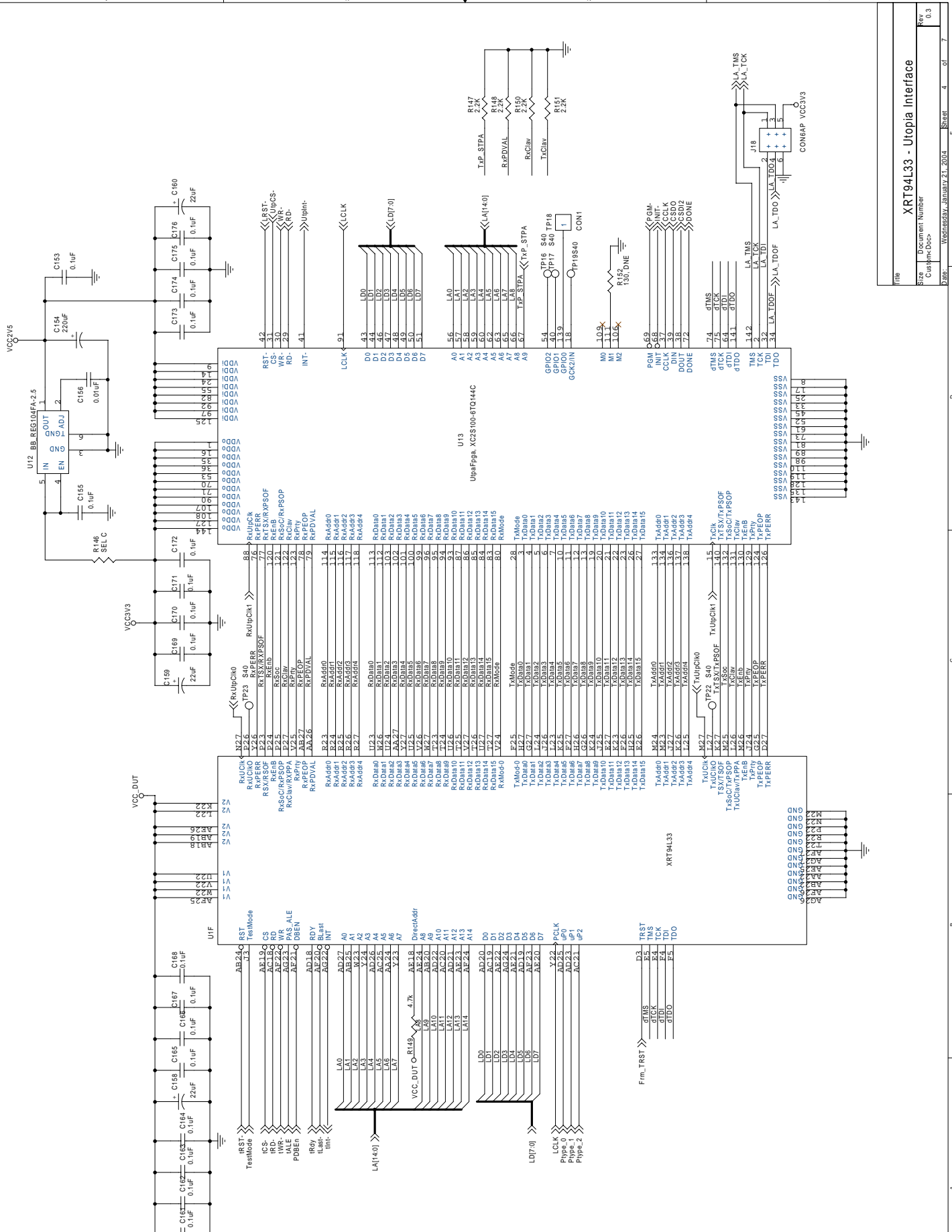
File	XR94L33 - OC-3 Transceiver
Size	Document Number
Doc	C:\esim\doc
Date	Wednesday, January 21, 2004
Sheet	2 of 7
REV	0.3

VCC2V5

VCC3V3

VCC\_DUT



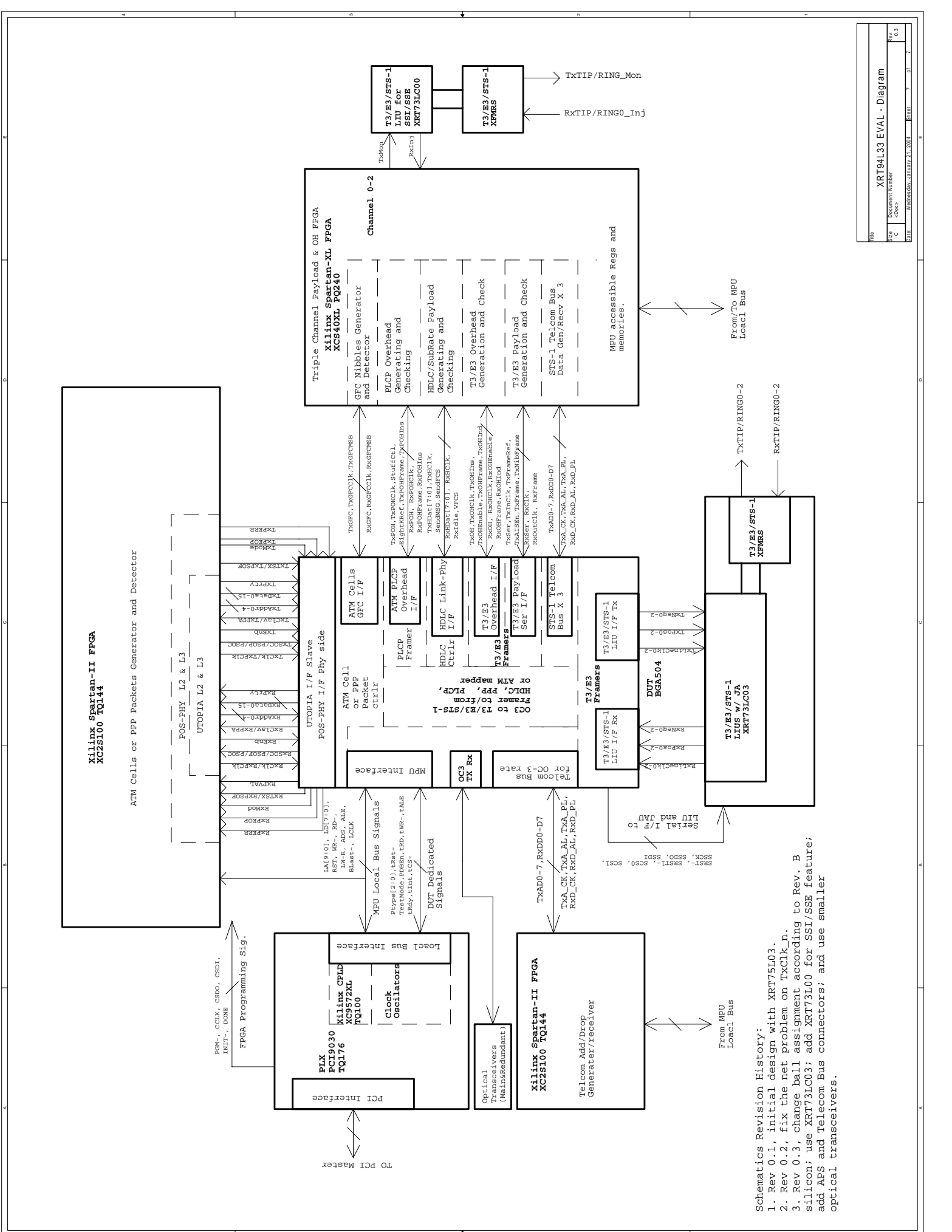


File	Document Number	Sheet	4	of	7
Size	C:\jmc\doc	Date	Wednesday, January 21, 2004	Rev	0.3

**XRT94L33 - Utopia Interface**







**Schematics Revision History:**

- Rev 0.1, initial design with XRT75L03.
- Rev 0.2, fix the net problem on TxClk.n.
- Rev 0.3, change ball assignment according to Rev. B silicon; use XRT73LC03; add XRT73L00 for SSI/SSE feature; add APS and Telecom Bus connectors; and use smaller optical transceivers.